

GREEN POWER TRAKTORDRIVET RESERVELVERK

1500 RPM	Typ GP130TRL1
-----------------	----------------------

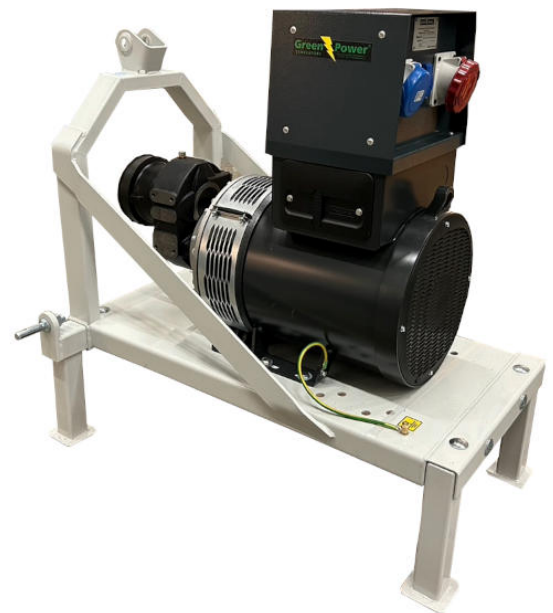
These generating sets are compact, solid and easy to use, arranged on a 3 points base in order to guarantee a safe coupling with every kind of tractor.

Power is transmitted through the cardan joint (not included), which is connected to the overgear.

Generating sets for tractor coupling are especially designed for farms, agricultural industries and pastures but could be easily adopted in every emergency situation.

Generating set

Prime power	[KVA]	130
Prime power	[KW]	104
Stand-by power	[KVA]	143
Stand-by power	[KW]	114,4
Voltage	[V]	400 / 230
Frequency	[Hz]	50
RPM	[rpm]	1500
Cosp		0,8
Required tractor power	[hp]	160
Entry tours	[rpm]	750
Overgear ratio		1 : 2
Overgear lubricant capacity	[lt]	2



Alternator

Manufacturer	LINZ ELECTRIC
Poles number	4
Phases number	3
Regulation	AVR
Type	Brushles
Drip proof	IP 21
Overload accepted	10,00%
Voltage accuracy	±1%

Dimensions and weight

Lenght	[mm]	1100
Width	[mm]	1000
Height	[mm]	1300
Weight	[kg]	550

EQUIPMENTS

Standard equipment



Triple-phase alternator



First oil filling



Base frame with 3 points coupler



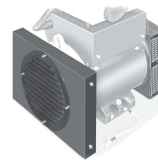
Electric manual panel with a 230V ECC socket 16A 3 poles and
The electrical board for full power,
magnetothermal differential switch with IP55 cover,
voltmeter, frequencymeter and ammeter.



Alternator with automatic voltage regulator (AVR)



Optionals



Version with IP44 protection



Greenpower AB

Helsingborgsvägen Varalöv
262 96 Ängelholm
Tel: 0431-222 40
Fax: 0431-222 70
E-mail: info@greenpower.se
web:www.greenpower.se